



## Portable, Powerful Cleaning.

If you have areas that are difficult to access and clean, each Farrow MAX™ series machine packs a full-size punch in a compact package. Designed with smaller projects in mind, the F250MAX is an ultra-compact machine with all the rugged reliability of our larger units. With a pot capacity of 4 bags of media, this unit will operate for 3-4 hours without refilling. This is perfect for smaller applications that only take a short time to complete, and you will save money by using smaller amounts of media to complete quick projects. The F250MAX™ is fully caged and can be forked, lowered, or hoisted into almost any jobsite including storage tanks! Day in and day out, it will deliver dependable operation in any challenging environment.

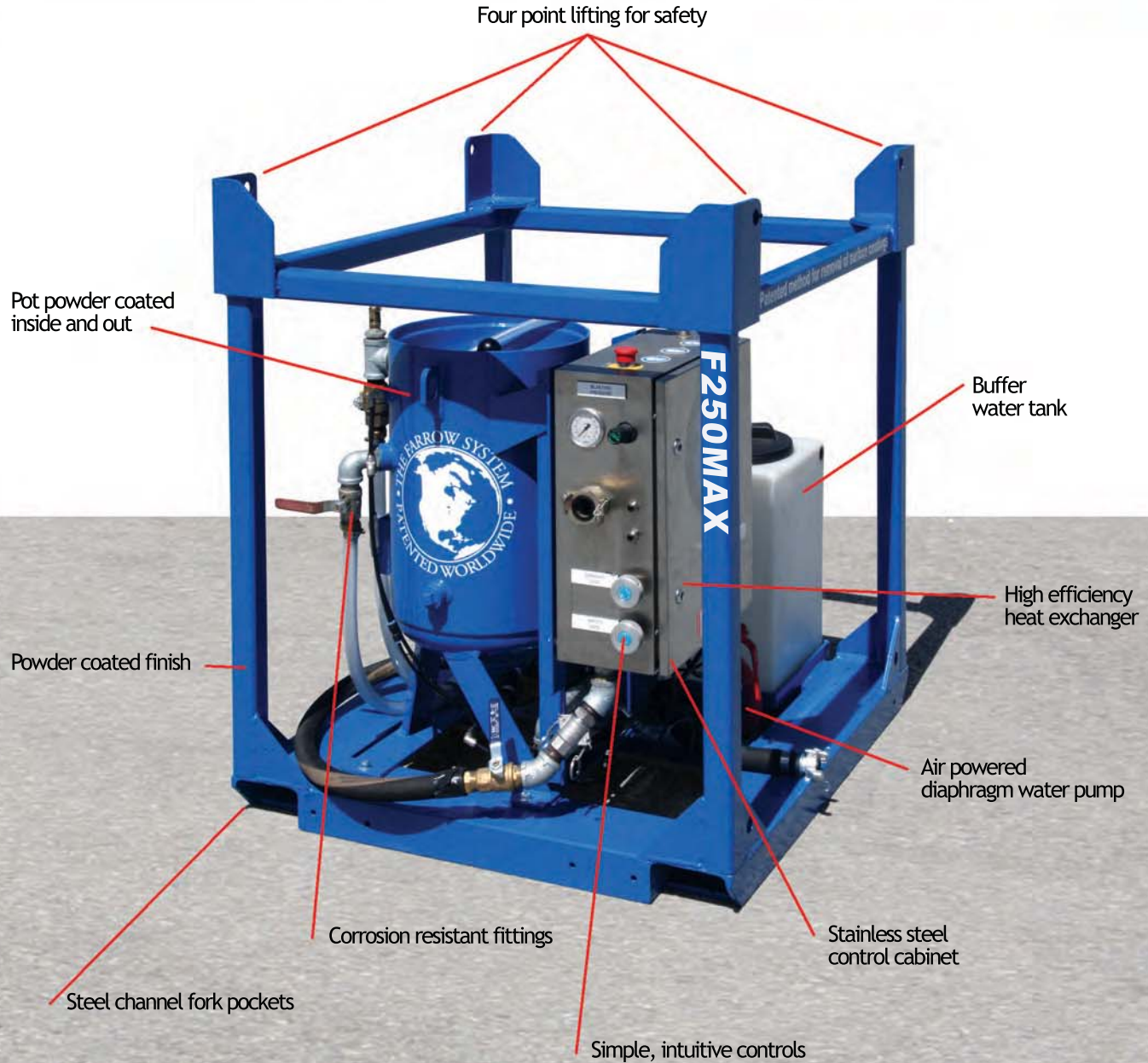


Your authorized Farrow System® dealer.



1.800.337.9423 [www.coldjet.com](http://www.coldjet.com)

# FARROW SYSTEM F250 MAX®



PATENTED WORLDWIDE.

## FARROW MAX SERIES®



The 100% stainless steel control cabinet is super durable and sealed against the elements. It houses the dosing regulators, controls, valves, and gauges that monitor the system performance. Intuitive controls are easy to use, reducing training time required to get consistent results.



Heat is added to the process simply and reliably with a high-efficiency heat exchanger. It transfers heat from the compressor air to the water, heating the pressurized pot. Heated elements are safely located behind the lockable cabinet door.



Compressed air is used to pump water for the process from an on-site water source or from the on board water tanks on our self-contained models. This high reliability Ingersol Rand pump delivers consistent pressure, is efficient, and is built to give you years of trouble-free service.



All Farrow System MAX® Series units have a self contained corrosion proof polyethylene water tank to provide a buffer of water flow to the pump. This helps minimize interruptions in the water supply thereby keeping the cleaning stream at a constant flow, and you on schedule.



The pressure pot is a key component of the Farrow System®. Specifically sized for the output of the machine, each pot complies with AMSE vessel code regulations Section VIII, Division One. Each pot is powder coated inside and out to assure maximum reliability and longevity in the field.



## SPECIFICATIONS

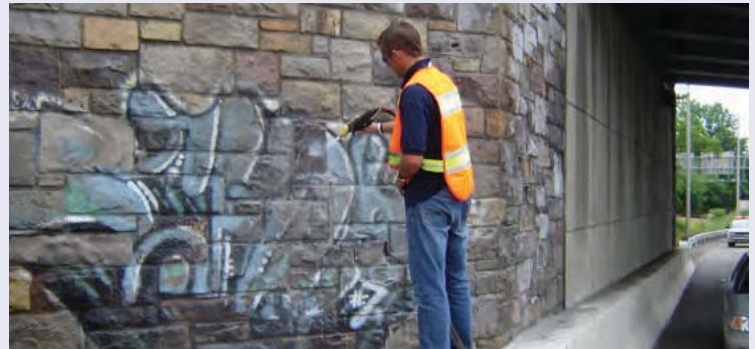
FARROW 250 MAX	
Dimensions	49"L x 40"W x 45"H
Weight	600 lbs. Dry, 897 lbs. Wet
Air Capacity	100-250CFM ***
Pot Media Capacity	200 lb. (4 Bags Farrow Green Clean®)
Pot Working Pressure	100 PSI Max
Hose Length	50 ft. std. (Up to 250 ft. with extension hoses)
Available Accessories	Hose Extension, Blast Nozzle & Holder, Handle Assembly
Warranty*	Complete Machine for 1 Year From Original Purchase Date
*Please see complete warranty for details. ** Specifications subject to change without notice. *** Hose and nozzle size dependent on air supply.	



Farrow Green Clean® must be used to achieve the fast, cost effective, and environmentally friendly cleaning possible only with The Farrow System®.

Available for immediate shipping, economical Farrow Green Clean® media, hose extensions, nozzles, and OEM replacement parts are only a phone call away at:

1-888-FARROW-8



*The F250MAX is the ideal size for spot cleaning and smaller projects.*



Your authorized Farrow System® dealer.

1.800.337.9423 www.coldjet.com  
455 Wards Corner Road, Loveland, OH 45140